



# valve A·80 vitaq



TECHNICAL SHEET 07/2016 | IPO1020

## SCOPE

A·80 VITAQ series are 1/4 turn angle valves designed for being connected to water pipe systems. They are used to shut off individually water supply to basins, cisterns, toilets and other different water supply points to proceed to their repairing or replacement.

In general, all those applications that require a valve to shut off the liquid flow, assuring leak tightness and fulfill all the following service conditions.

The VITAQ SYSTEM makes them particularly suitable to avoid the effects of lime, increasing the lifespan of the valve.

A·80 VITAQ is a quarter turn tap, allowing great maneuver accessibility in reduced spaces.

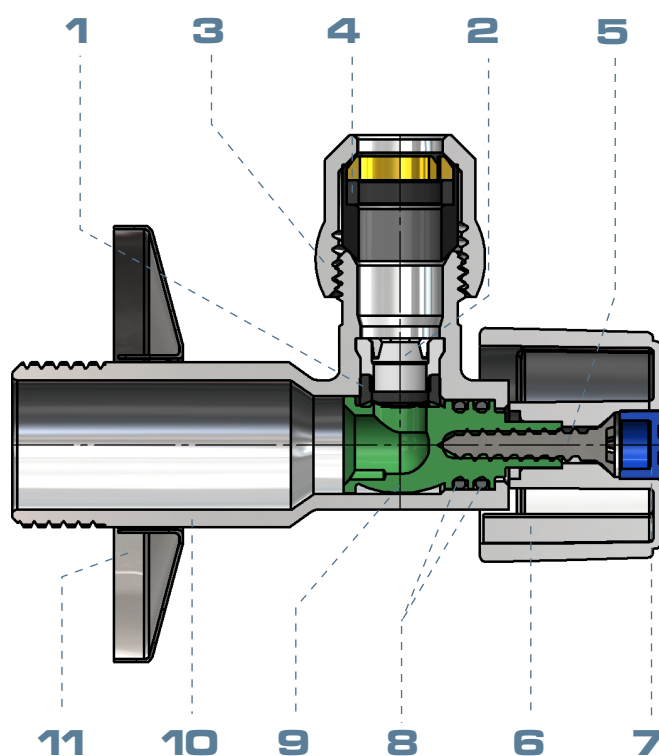
## SERVICE CONDITIONS

Nominal pressure :	16 bar
test pressure:	25 bar
Temperature range:	Cold and hot water until 95°C
Fluid:	Drinking water and domestic hot water

## COMPONENTS

Item	Component	Material	Treatment
1	Seat	NBR	
2	Supporting Clip	POM	
3	Nut*	European Brass CW617N	Chrome plated
4	Bicone*	Polyamide	
5	Screw	Stainless steel	
6	Handle	Metal	Chrome plated
7	Index	ABS	Blue
8	O-rings	NBR	
9	VITAQ stem	Anti-lime polymer	
10	Body	European Brass CW617N	Chrome plated
11	Rosette	Stainless steel AISI 430	

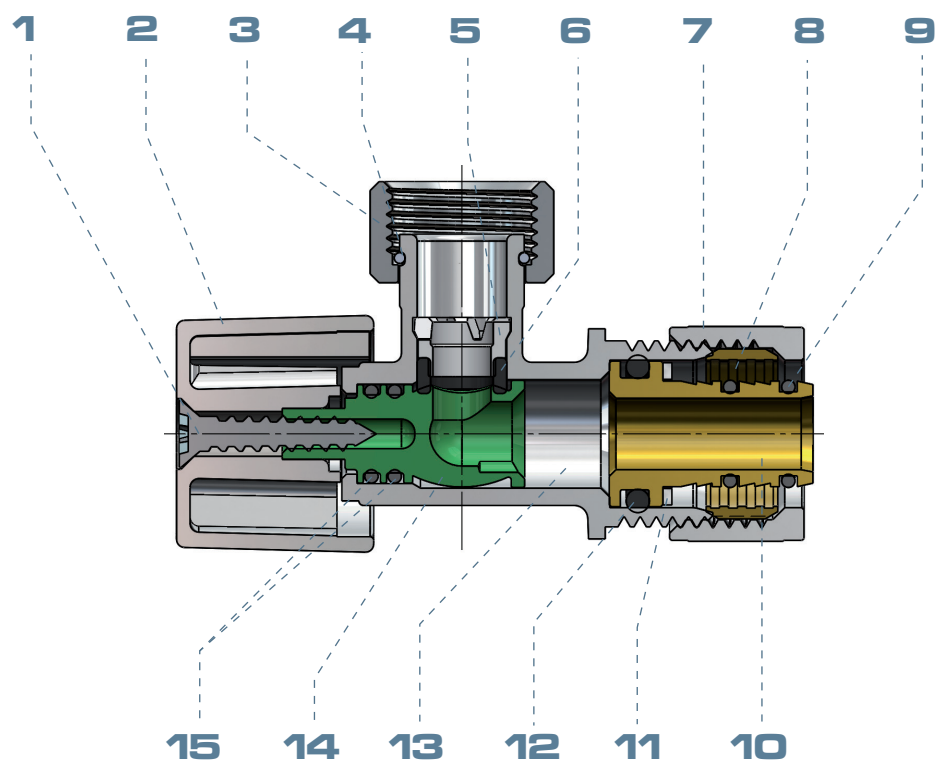
\* Depending on model





## COMPONENTS

Item	Component	Material	Treatment
1	Screw	Stainless steel	
2	Handle	ABS	
3	Nut	European Brass CW614N	
4	Supporting ring	Stainless steel	
5	Supporting clip	POM	
6	Seats	NBR	
7	Nut	European Brass CW617N	
8	Bicone	European Brass CW614N	
9	O-rings	NBR	
10	Nozzle	European Brass CW614N	
11	Washer	PTFE	
12	O-ring	NBR	
13	Body	European Brass CW617N	
14	VITAQ stem	Anti-lime polymer	
15	O-rings	NBR	



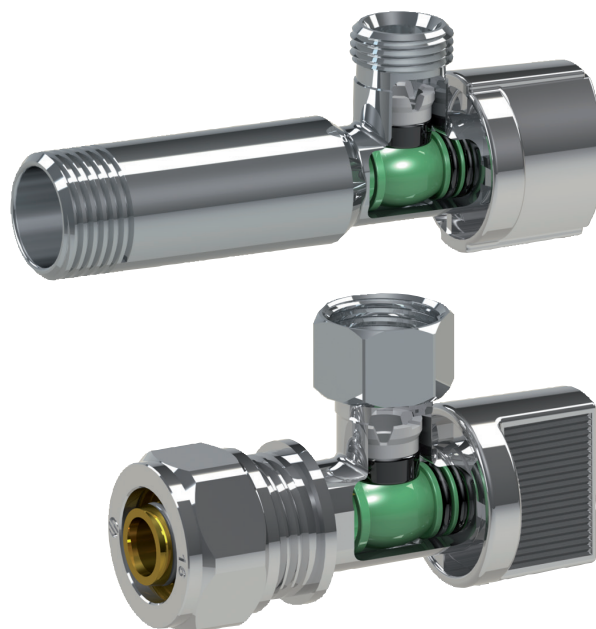
## MAIN CONSTRUCTIVE FEATURES

### VITAQ SYSTEM

Stem and ball are manufactured in one whole piece made of anti-lime polymer, which increases its resistance and performance, avoiding lime effects.

This original ARCO's component has been designed to reduce loss of pressure, keeping a constant flow rate and avoiding noise. As well ball-stem's quarter turn system has the same fundamental features of leak tightness and loss of pressure that you can find in the A-80 series.

VITAQ SYSTEM is the perfect solution to prevent lime problems, that can render useless the valve and maintain the flow rate constant along the time, avoiding the lime to adhere, reducing the water flow.



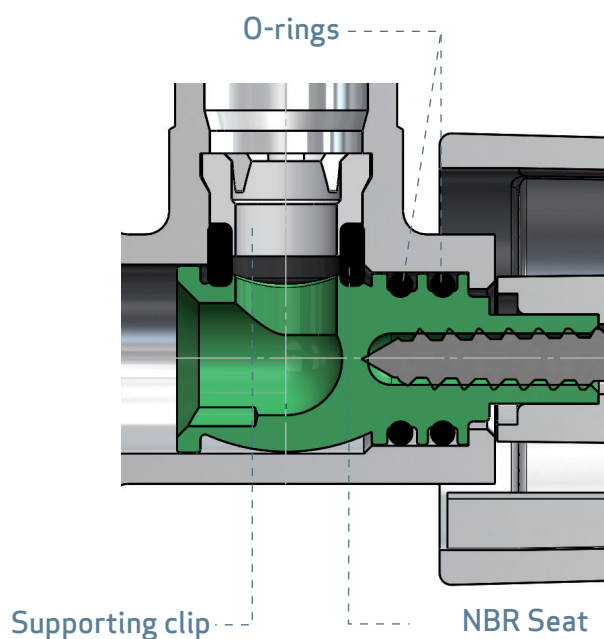
### Internal leak tightness

The supporting clip made of POM is placed in the valve to push the NBR seat against the stem-ball, assuring internal leak tightness.

This system cannot be dismantled, avoiding improper manipulations.

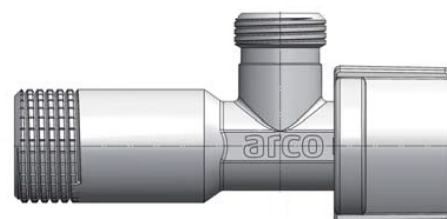
### External leak tightness

A pair of NBR O-rings placed on the stem assure external leak tightness. This double joint system guarantees safety against external leakage, use, ageing, etc.



### KNURLED THREADS

A-80 VITAQ valves have the classic knurled system from ARCO on the thread to facilitate the installation. It makes easier the application of Teflon, esparto grass... to the thread, avoiding sliding of these elements during its application.



## MAIN CONSTRUCTIVE FEATURES

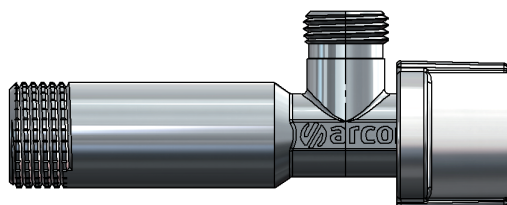
### A-80 LONG VITAQ

A-80 LONG VITAQ valves have a longer body than standard models. These valves are intended to be used in plumbing installations in which network source connection is quite deep in the wall, being impossible a normal body angle valve.

In these kind of installations, A-80 LONG VITAQ can be connected without any extra extender, saving time and cost of the work by up to 40%.

Total length A-80 LONG VITAQ: 92 mm

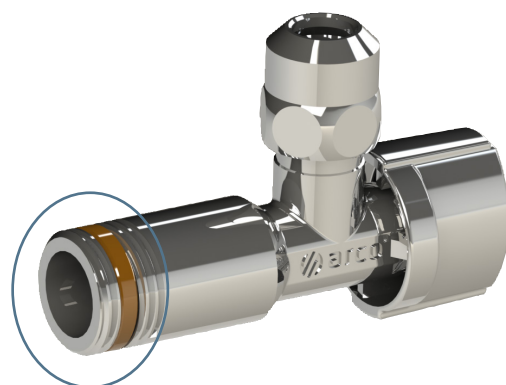
Total length A-80 VITAQ: 80 mm



### ASAG: TEFLON COVERING SELF-TAPPING RING (according to model)\*

These are models with a Teflon system on the inner thread. They can be directly threaded to the water inlet without the need of applying Teflon tape, esparto grass or any other sealing material.

The valves with the self-tapping Teflon ring save around 30% of time in the installation.



### BICONO COMBI TYPE (according to model)\*

These are models with a Teflon system on the inner thread. They can be directly threaded to the water inlet without the need of applying Teflon tape, esparto grass, or any other sealing material.

The valves with the self-tapping Teflon ring save around 30% of time in the installation.

\*See available models according current rate.





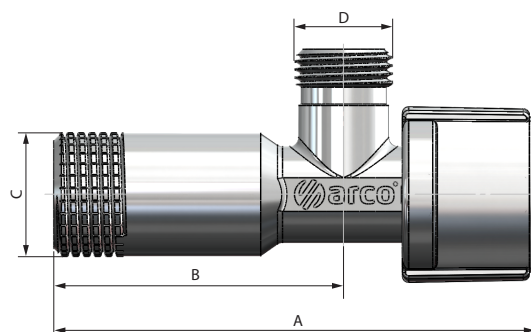
## DIMENSIONS

A-80 VITAQ NOVA METAL Handle

Size	A	B	C	D
1/2 x 3/8*	80	48	G 1/2	G 3/8
1/2 x 1/2	80	48	G 1/2	G 1/2

G Thread ISO 228

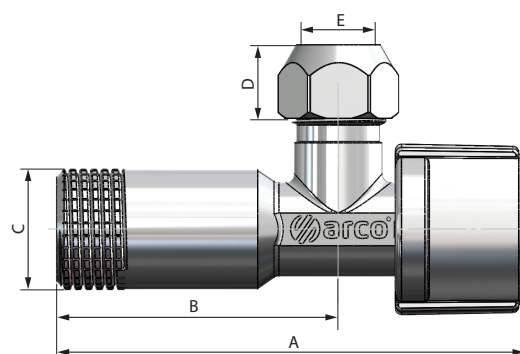
\* Also available with ASAG Ring



A-80 VITAQ NOVA METAL Handle - with nut

Size	A	B	C	D	E
1/2 x 3/8 x 10	80	48	G 1/2	12	10

G Thread ISO 228

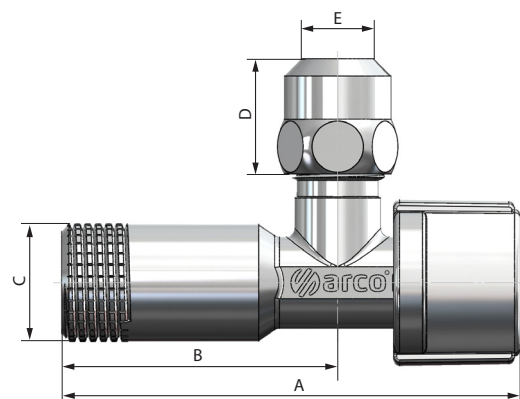


A-80 VITAQ NOVA METAL Handle - with long nut

Size	A	B	C	D	E
1/2 x 3/8 x 10*	80	48	G 1/2	20	10

G Thread ISO 228

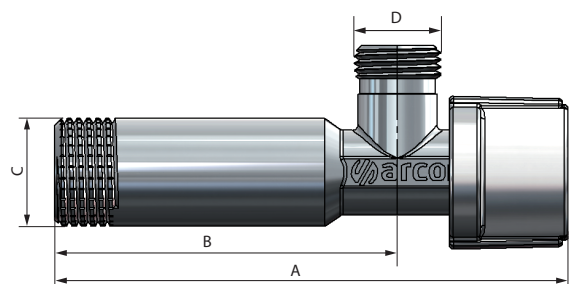
\* Also available with ASAG Ring and Polished finish



A-80 LONG VITAQ NOVA NOVA Handle

Size	A	B	C	D
1/2 x 3/8	98	64	G 1/2	G 3/8

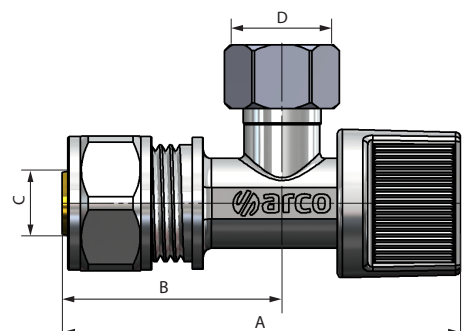
G Thread ISO 228



A-80 VITAQ PEX ORIGINAL Handle

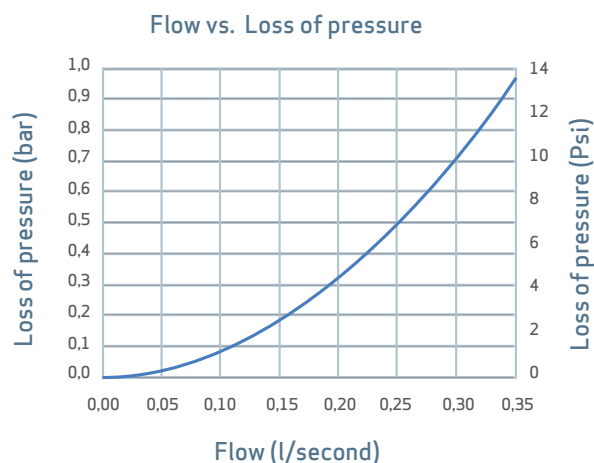
Size	A	B	C	D
PE16 x 3/8 TL	71	39	PEX 16	G 3/8

G Thread ISO 228



## HYDRAULIC FEATURES

Hydraulic characteristics obtained according Norm EN 1267.



## INSTALATION AND ASSEMBLY

The installation of valves must be done with the right tool, mostly with 15 spanner.

The tool should be adjusted to the flat sides of the body of the valve, avoiding the deformation of the zone by high pressure of the tool.

Components of the valve must not be altered. The substitution or dismantling of the handle can cause external leaks.

All quarter turn handle valves should work totally open.

